

International Foundation Programme

By China Campus Network

1. About CCN

Aim

China Campus Network (CCN) is a University Consortium jointly established by 28 leading Chinese universities.

CCN is committed to facilitating quality access to Chinese Higher Education for international students and maximizing their benefits from China Opportunity, through the provision of International Foundation Programmes and Careers Development Programmes & Services.

CCN offers prospective students exclusive access to leading Chinese universities and provides services that help them before, during and after their study.

Member Universities

Anhui University of Technology	Nankai University
Beihang University	Northwestern Polytechnical University
Beihua University	Shandong University
Beijing Foreign Studies University	Shanghai Jiao Tong University
Beijing Normal University	Shanghai University
Beijing Jiaotong University	Shanghai University of Political Science and Law
Capital University of Economics and Business	Southeast University
Changchun University of Science and Technology	Southern Medical University
China University of Petroleum	Tianjin University
Fudan University	University of International Business and Economics
Guizhou University	Xi'an Jiaotong University
Harbin Institute of Technology	Xi'an Shiyou University
Heilongjiang University	Xidian University
Jiangsu University	Zhejiang University

2. About IFP

Aim

CCN's International Foundation Programme (IFP) is designed to prepare international students for successful degree study at undergraduate or graduate level in Chinese universities.

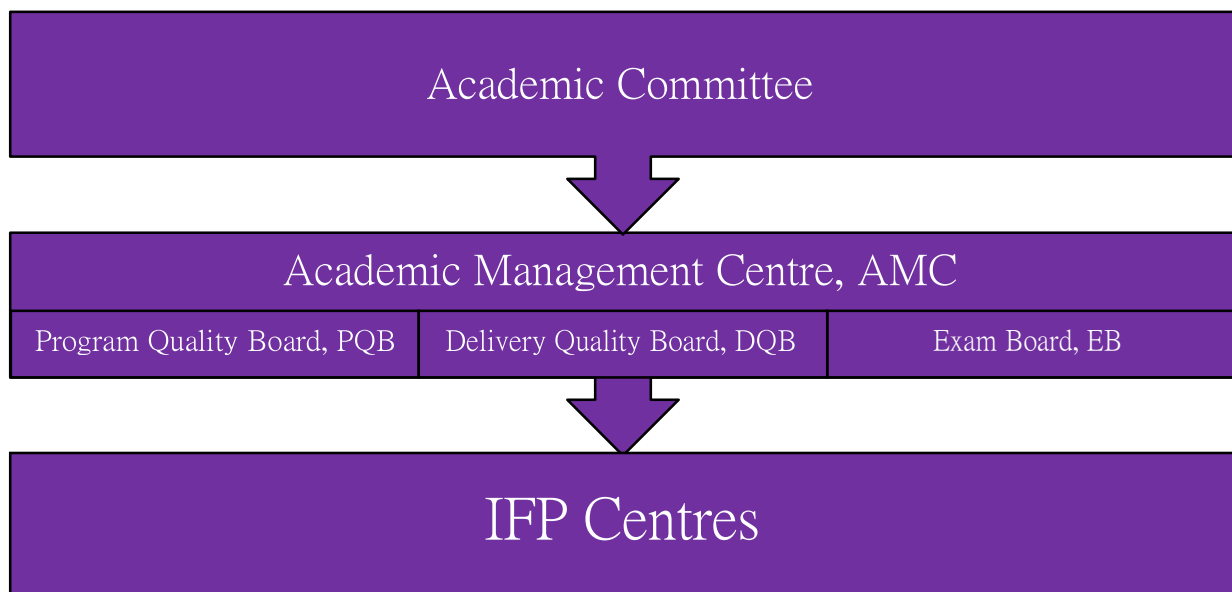
Features

IFP offers comprehensive values for international students. It is:

- Jointly developed by top Chinese universities with decades of experience in offering undergraduate foundation programmes to international students: University of International Business and Economics, Shanghai Jiao Tong University and Tianjin University.
- Delivered in and by the abovementioned CCN member universities in accordance with robust quality assurance system.
- Recognised by CCN member universities with guaranteed entry. Upon successful completion of IFP, students are offered guaranteed entry into at least one CCN member universities.
- Upon successful completion of the IFP, students are eligible for premium scholarships into CCN partner university programmes for both undergraduate or postgraduate. The scholarships fall into four specific categories. The Regional Office can provide you more information on the scholarship criteria.

Quality Assurance

IFP is developed and delivered under strict Quality Assurance System.



Development

IFP is developed based on thorough primary and secondary research with both prospective and existing students and university teachers. The research covers secondary education background, performance in universities, and planning upon graduation.

Further to the research, IFP is jointly developed with the following universities:

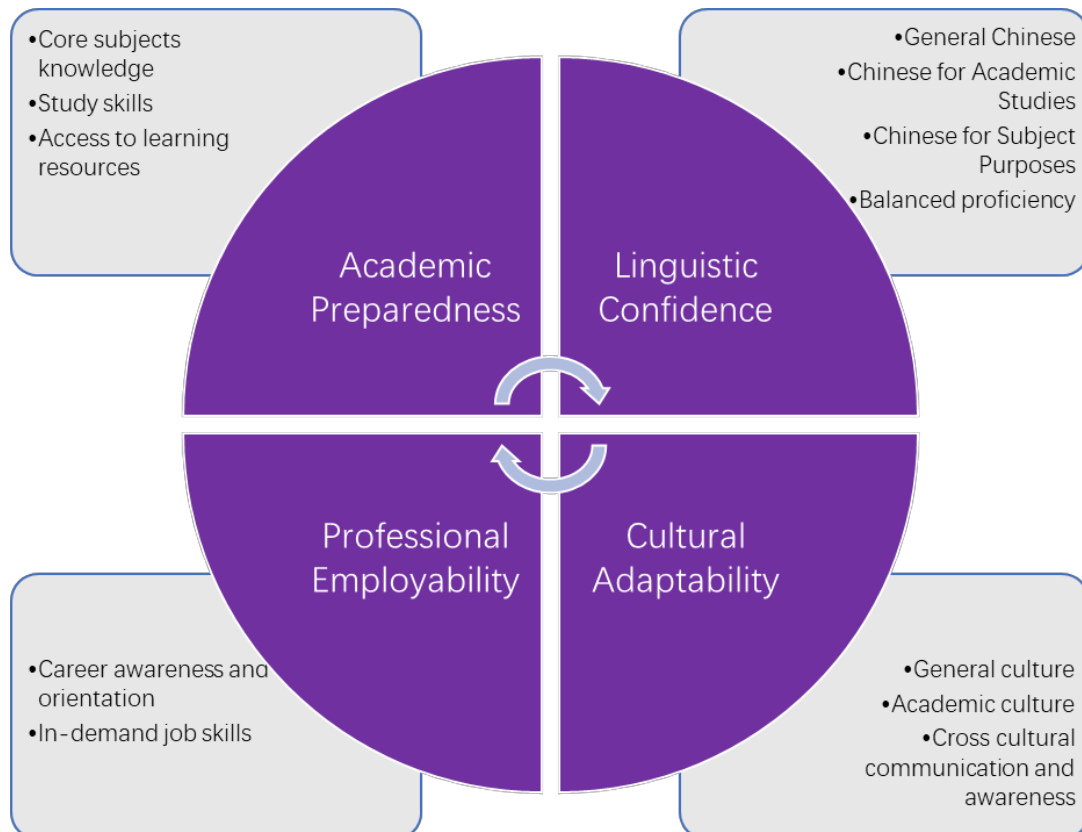
Programme	Development Partner
IFP Business	University of International Business and Economics
IFP Science & Engineering	Shanghai Jiao Tong University
IFP Humanities	Tianjin University

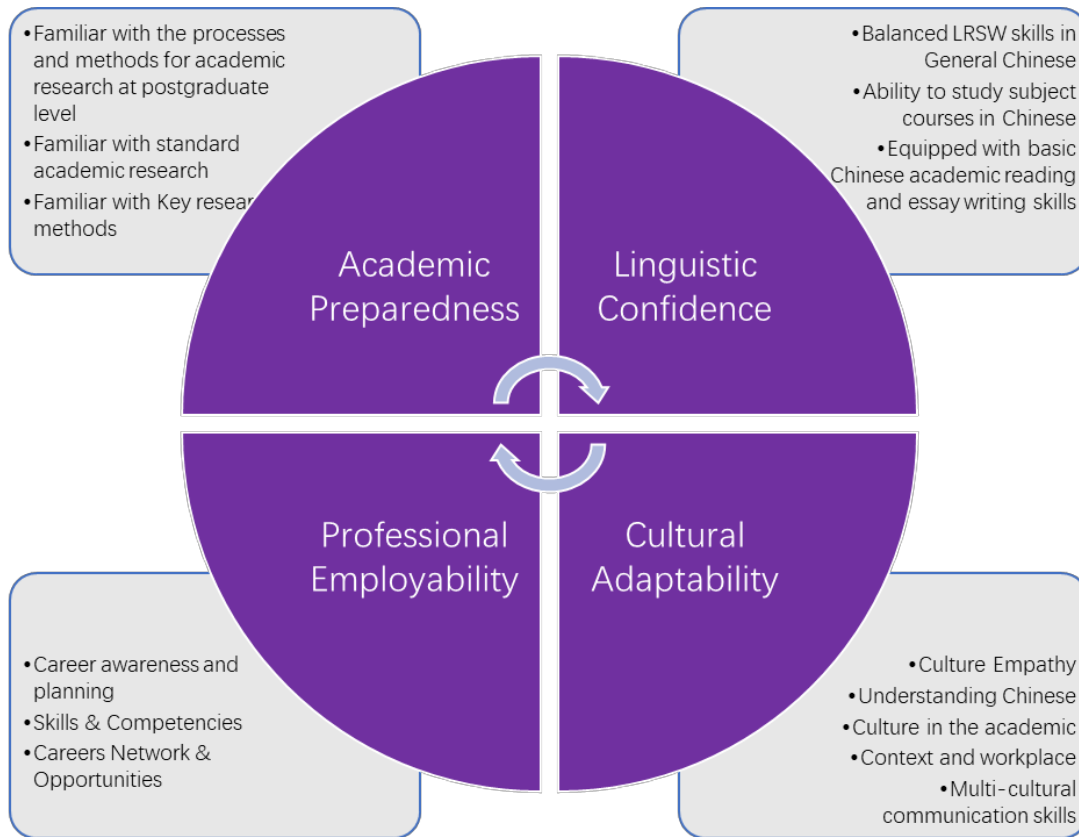
Programme

The International Foundation Programme consists of that for undergraduate study (IFP UG) and postgraduate study (IFP PG).

General Learning Outcomes

IFP UG:



IFP PG


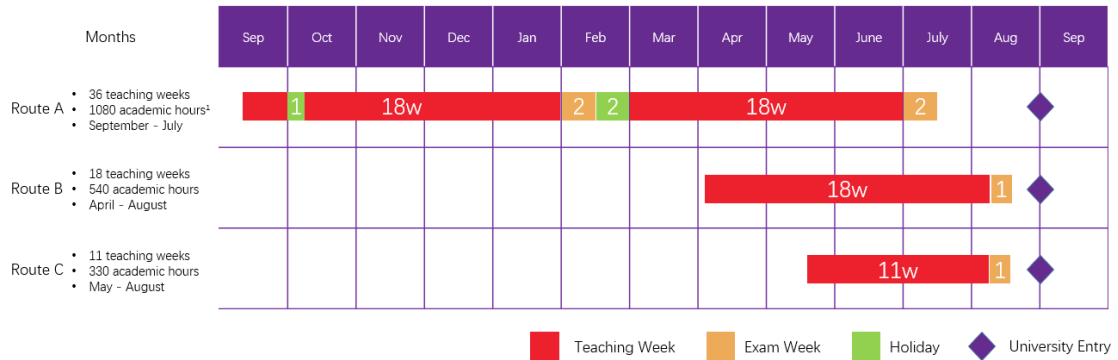
Curriculum

Streams & Routes

Both IFP UG and PG comprise three streams in relation to prospective fields of study in Chinese universities.

- **Business Stream:** for degree programmes including International Economics & Trade, Business Administration, Finance, Accounting, etc.
- **Science & Engineering Stream:** for degree programmes including Mathematics, Computer Science, Civil Engineering, Biomedical Engineering, Architecture, etc.
- **Humanities Stream:** for degree programmes including Literature, Education, Law, Sociology, Media, etc.

Both IFP UG and PG provide are available in three standard routes, which apply to all the three streams. The schedule of Academic Year 2018-2019 is shown below:



Categories and Courses

Both IFP UG and IFP PG consist three categories. In IFP UG, the three categories are Chinese for Academic Studies (CAS), High School Subjects (HSS) and Pre-University Subjects (Pre-U). In IFP PG, the three categories are Chinese for Academic Studies (CAS), Research Methodology (RM) and Career.

Chinese for Academic Studies (CAS) typically consists of General Chinese (GC) and Chinese for Subject Purposes (CSP).

Programme	Categories	Business Stream	S & E Stream	Humanities Stream
IFP UG	CAS	GC		
		CSP: Business	CSP: Science	CSP: Humanities
	Culture and Study Skills			
	HSS	Mathematics	Mathematics Physics Chemistry	-
Pre-U	Economics Business Studies	Computer Science	Chinese Grammar	
IFP PG	CAS	GC		
		CSP: Business	CSP: Science	CSP: Humanities
	RM	Research Methodology		
		Chinese Culture		
		Culture Adaption and Study Skills		
Career	China Access Programme			

Benchmark to HSK

IFP Chinese for Academic Studies is designed against HSK, the commonly accepted Chinese level criterion.

CAS Grade	Definition	Score	HSK Equivalency
A	Excellent	$\geq 90\%$	Level 5
B	Good	80 ~ 90 %	
C	Average	70 ~ 80 %	Level 4
D	Pass	60 ~ 70 %	
E	Fail	$< 60\%$	-

Teachers

While professional teachers are already available in the above centres/universities, CCN raises strict requirements to ensure all the teachers are qualified to deliver IFP courses. The requirements include those related to academic background, certification and teaching experience. All prospective teachers are required to complete IFP teacher training prior to programme delivery.

Student Services

Apart from taking classes, IFP students are provided with ongoing services to ensure they have the best experience in China.

CCN's student service starts from early consulting. The local consultants discuss with prospective IFP students to understand their interests and concerns, and give suggestions on the most appropriate solution based on the students' own wish and condition. Those taken into consideration include university, degree programme, location, budget and much more. The consultants also assess the prospective students to make sure they meet specific IFP entry requirement.

Upon finalising their decision, the students will have their further information passed to the admissions team in China. Upon the students' arrival in China, they are accompanied to their respective centres and settle down before study. The whole journey is hassle-free.

During the programme, CCN arranges tutors and mentors in addition to the teachers to solve the students' problems in terms of learning and living in China. Meanwhile, CCN's University Placement Team helps them complete university and scholarship application, till they complete

IFP and arrive at their desired destination successfully.

The students are once again accompanied to the universities. After IFP, CCN continues interacting with the students to track their performance, to give advice on career planning, and to seek programme improvement.